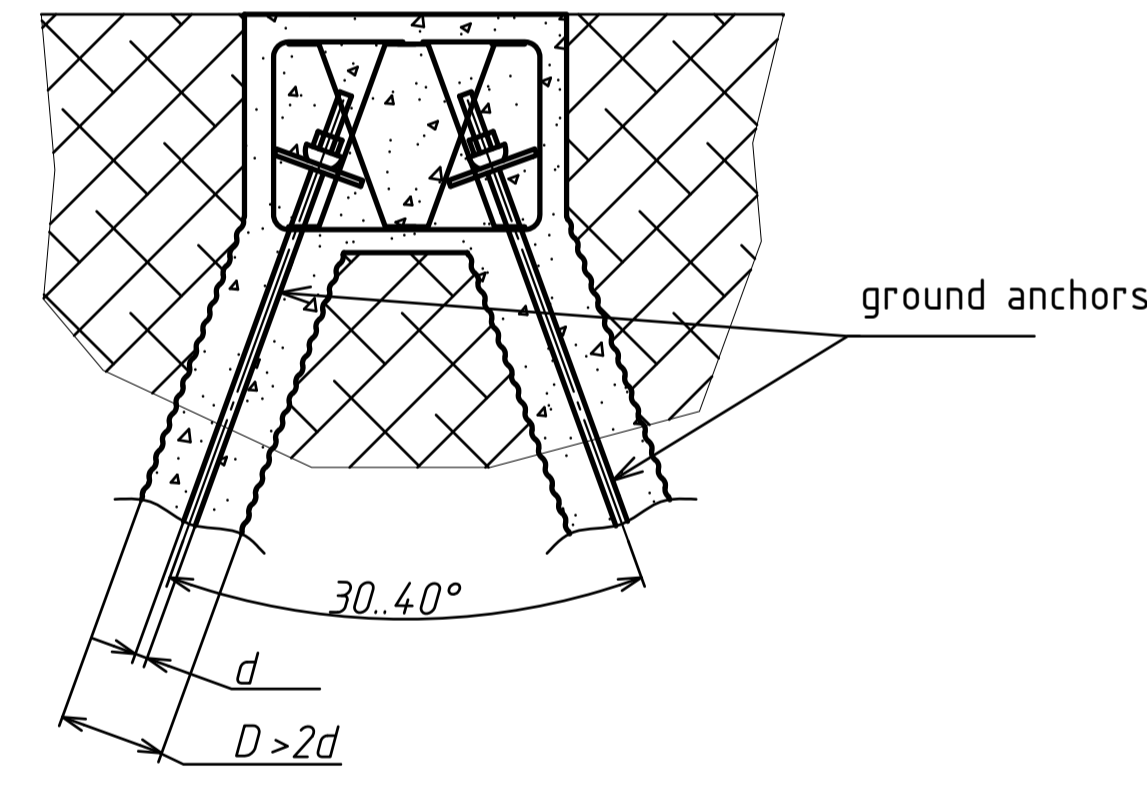
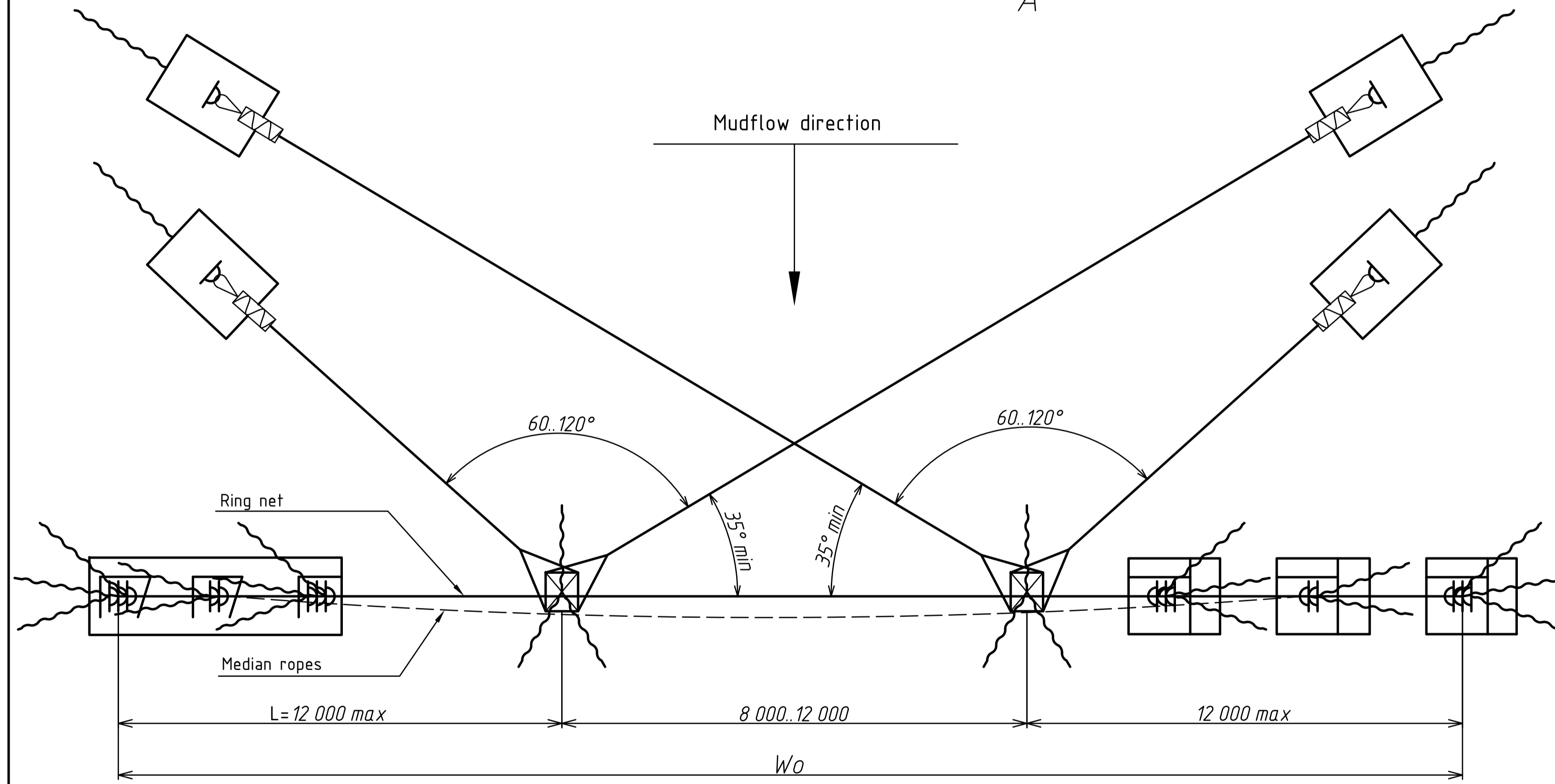
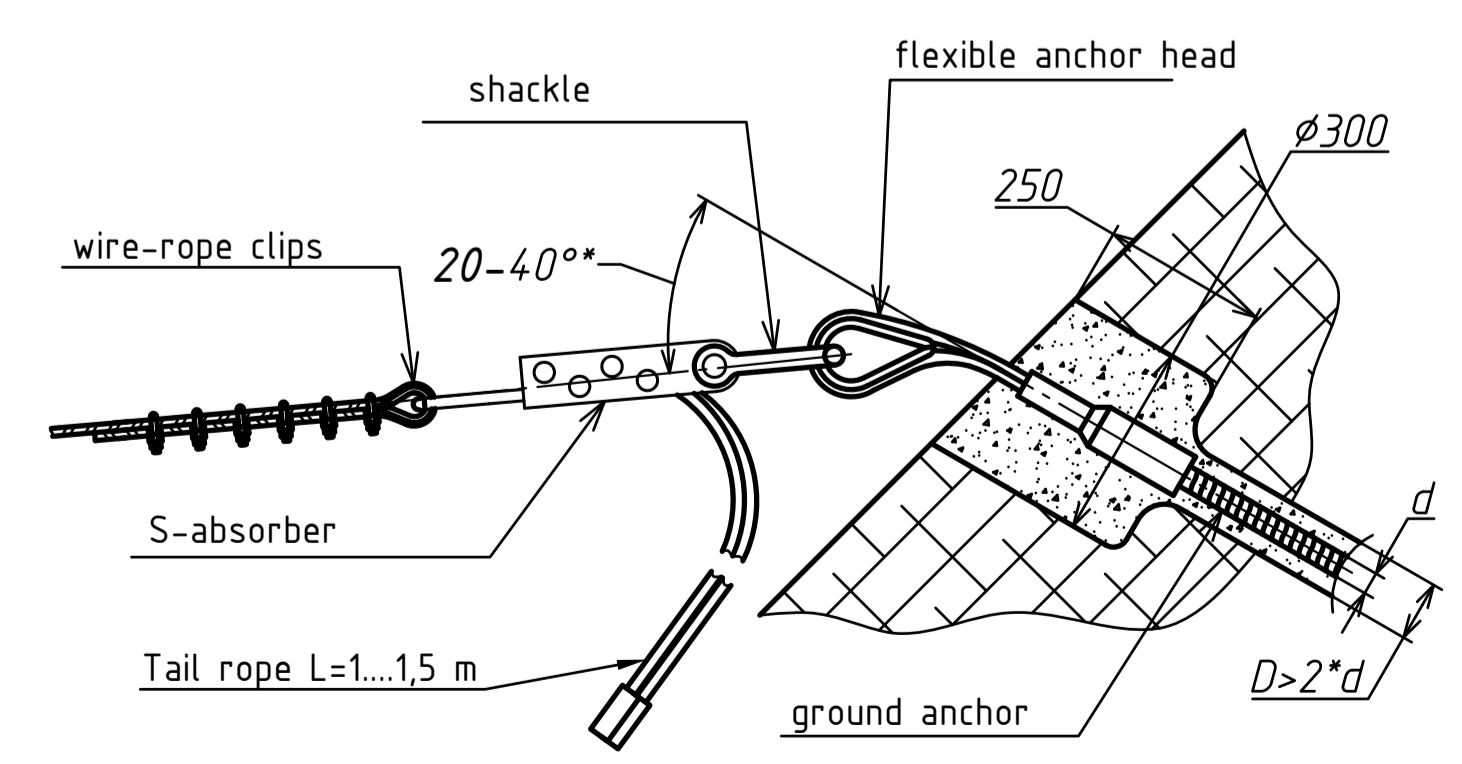


Pair installation of ground anchors



B Fastening of bearing rope from post to ground anchor with usage of flexible anchor head



1. The post is used for the width $W_0 > 16$ meters. When $12 < W_0 < 16$ meters - strengthen of top rope belt needed.
2. Maximum span of the top support rope ≤ 12 m. Rope sag below suspension points $f=L/20$.
3. Distance between posts from 8 to 12 m.
4. Distance between top or bottom and median ropes 1,2...1,5 m., distance between median ropes 1,5...2,0 m.
5. Distance between flood water level and bottom rope not less than 300 mm and not more than 600 mm.

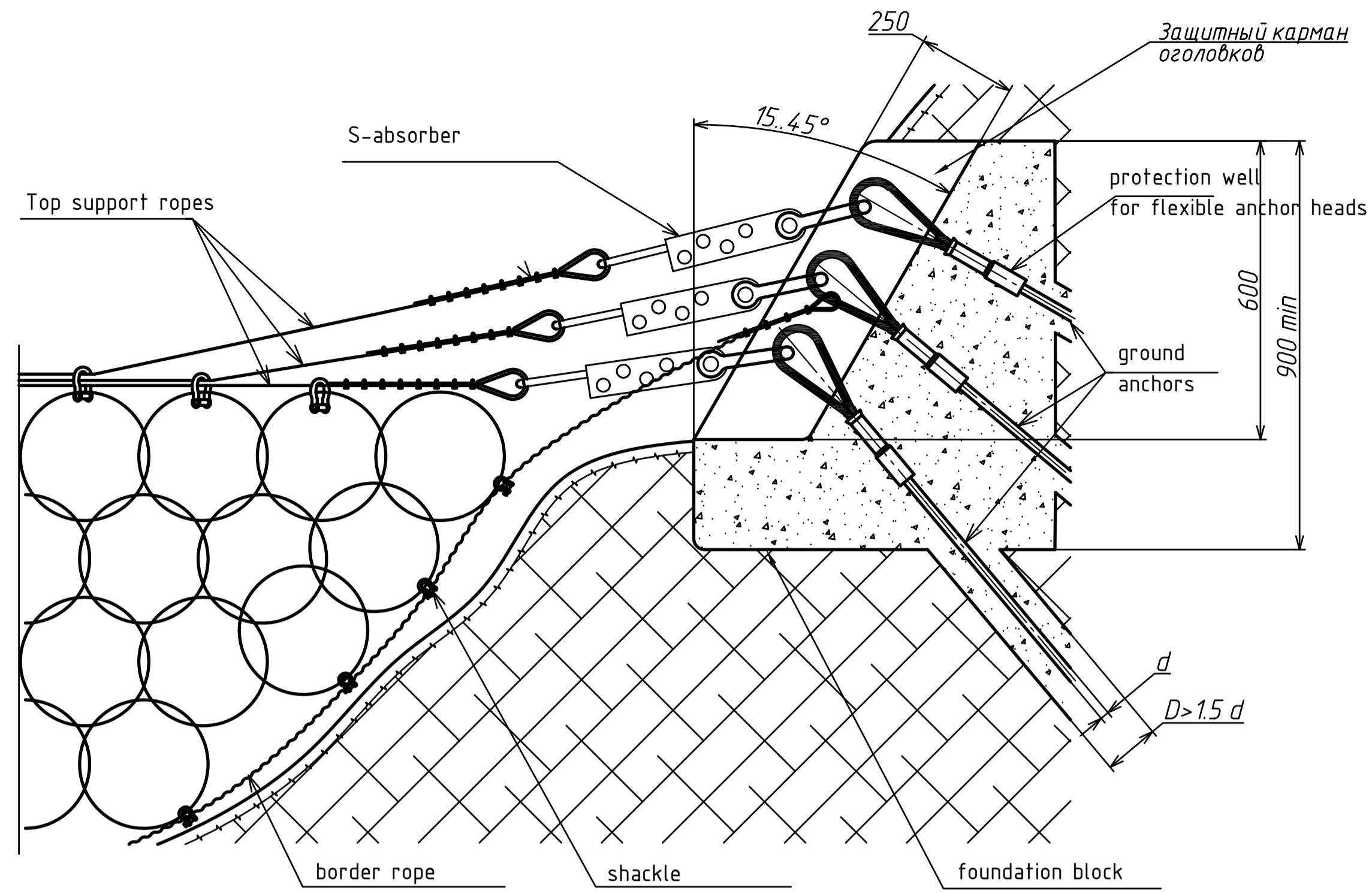
H_k - height of the barrier under stress; measured vertically from bottom of the valley to top rope;
 H_o - height of barrier post;
 L_p - height of ring net (from top to bottom ropes);

Component specification

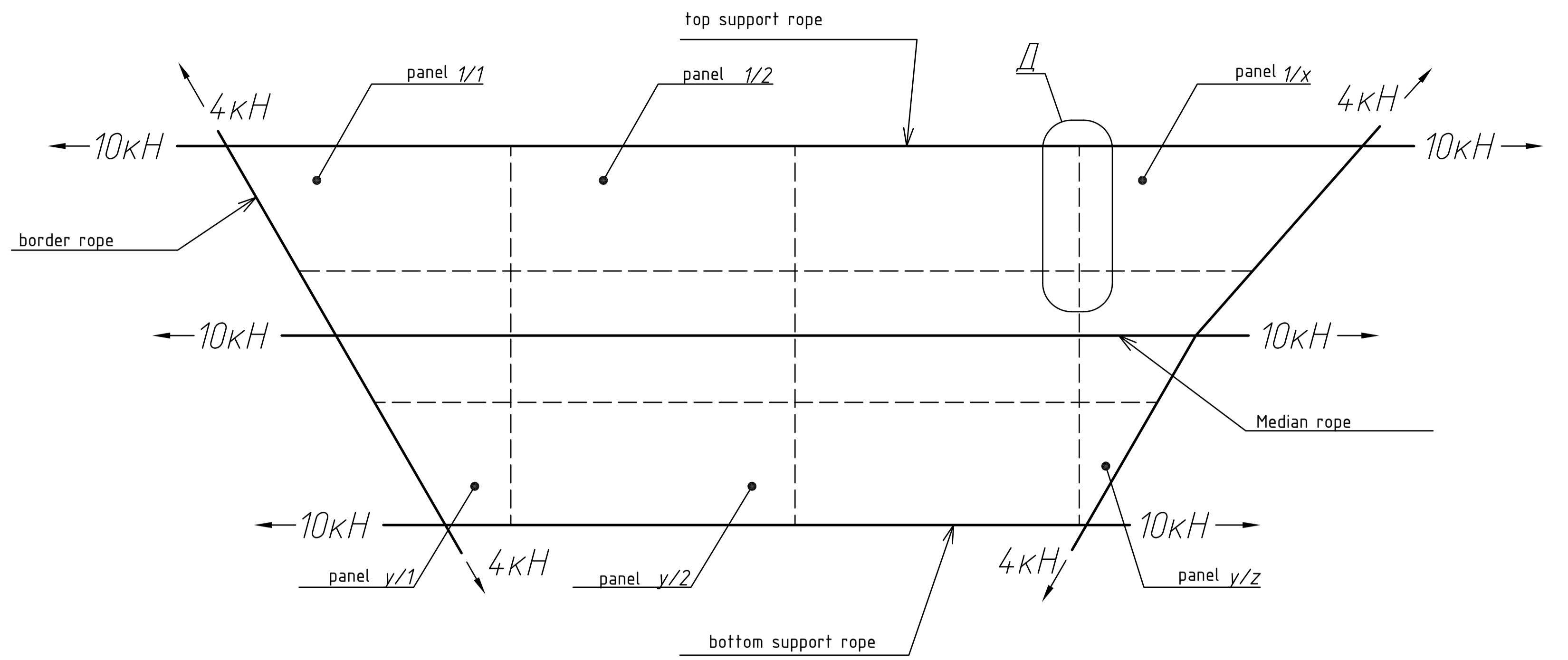
№	Item	Description
1	Hinged post	ТУ 5264-009-75212412-16
2	Ring net	ТУ 1275-001-75212412-04
3	Steel rope	ГОСТ 3081-80
4	Bearing rope	СКП1 РД 10-33-93
5	S-absorber	СТО 002-75212412-2008
6	Wire rope clip	DIN 1142
7	Dead eye	ГОСТ 2224-93, DIN 6899
8	Shackle (bearing)	DIN 82101 со шплинтом
9	Shackle (connection)	DIN 82101 со шплинтом
10	Protective tubes of top rope	ГБ-3001.10.01
11	Ground anchors (type 1 and 2)	ТУ 0950-003-83936644-2013 ТУ 5264-001-50868904-2013
12	Гибкий анкерный оголовок	СТО 005-75212412-2015

Г(1)

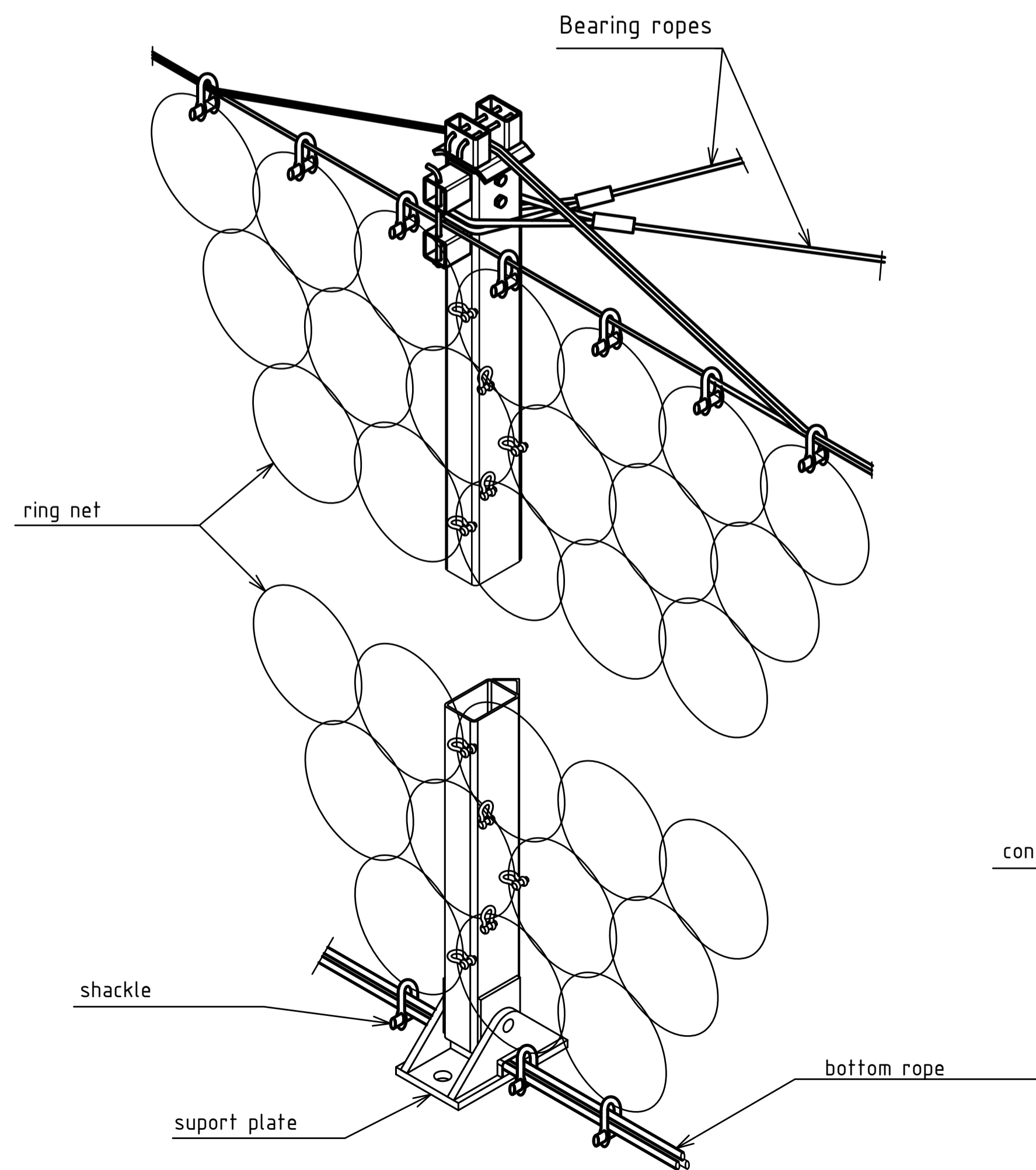
Fixing of the support ropes to foundation block



Layout of ring net panels and their types
Fixation of ring net panels to bearing ropes

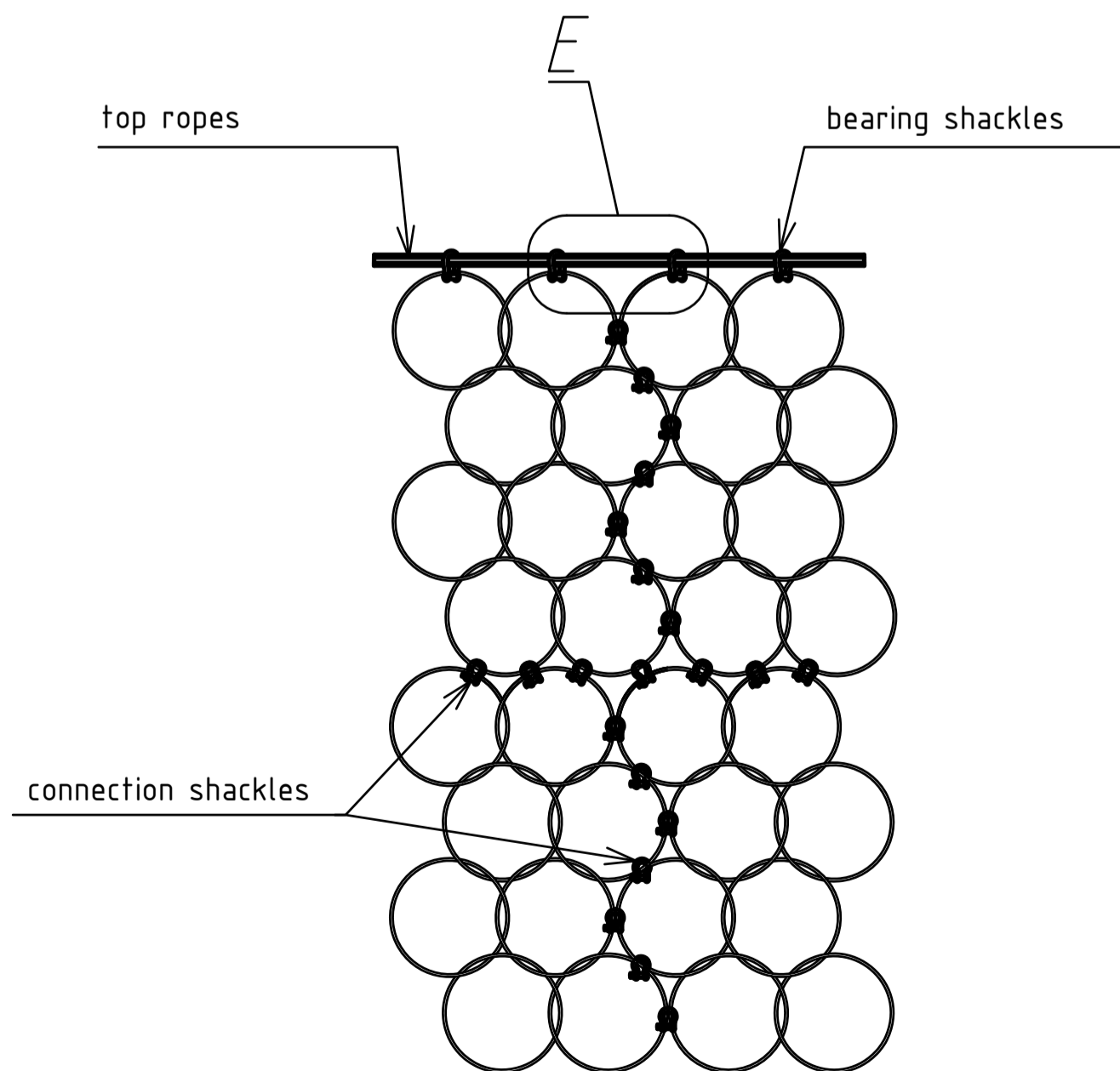


Barrier hinged post



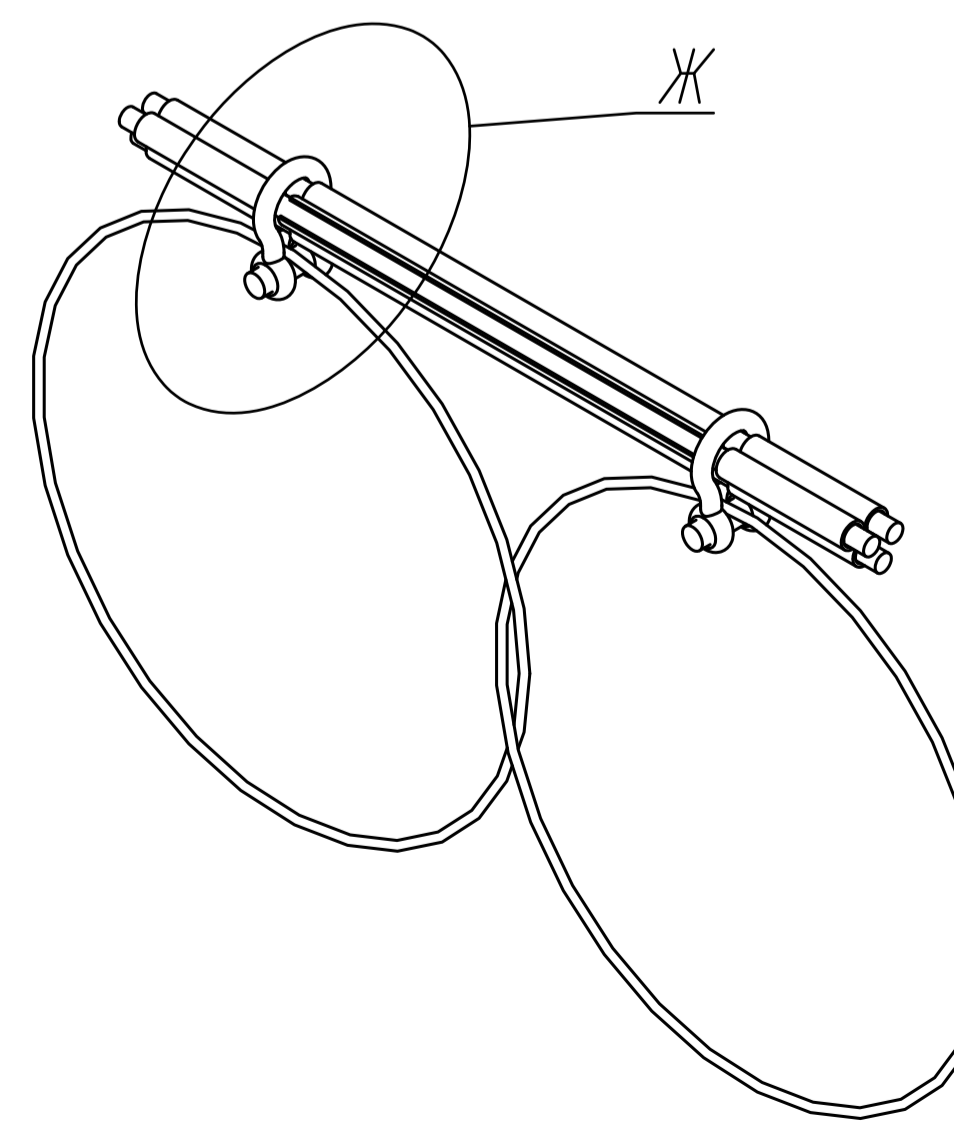
Д

Connection of ring net panels



Е

Protection from abrasion of top rope with steel tubes "beads"



Ж

